

## JPath

Providing a modern graphical user interface for HPE NonStop 6530 and IBM 3270 applications



*JPath integrates your mainframes with Web technology and, hence, creates an Internet look & feel for your legacy application, fully converting screens on the fly to GUI panels with no changes made to the host application.*

### Principle

The JPath approach is to derive your graphical screens on-the-fly by analyzing the original host screens using a set of configuration rules. These configuration rules can be refined to provide exact layout and processing specifications for individual screens or they can provide more general guidelines as to how screens are formatted.

### Benefits

#### ■ Better way of working

Along with a modern user interface come advantages like the following:

- Better user acceptance
- Less training effort
- Increased usability
- Increased productivity
- Reduced cost of errors

#### ■ Working from anywhere / Legacy goes mobile

The host application be accessed from any Internet enabled computer, even from mobile devices with no Java installed.

Lower cost of application access is achieved by the following:

- Central software deployment
- Central administration
- Less Java maintenance when the HTML GUI is used

#### ■ Enhanced way of working

Without changes the host application can be extended with functionality like the following:

- Consolidation – new screens can be designed by combining multiple green screens.
- Workflow Optimization – business processes can be streamlined by using data entries for filling similar fields in other places of the application, eliminating the need for the user to repeatedly re-enter the same data.
- Integration – data can be sent back and forth between JPath and another application so that e.g. graphs can be shown and pictures can be imported.

#### ■ Investment protection

With the modernized user interface business logic can be reused without reengineering, leading to immediate satisfaction of e-Business requirements.

#### ■ Prepared for new developments

New technologies can be employed at low risk by means of migration, i.e. starting quickly with a JPath GUI, the host application can be redesigned step-by-step.

### Requirements

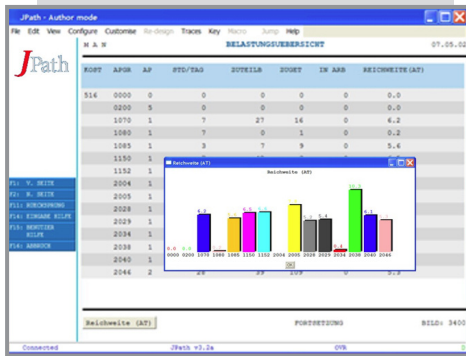
#### JPath Application

- Java 7 or later
- Standard Web Server (like comForte's SWAP, HPE's iTP, etc.)

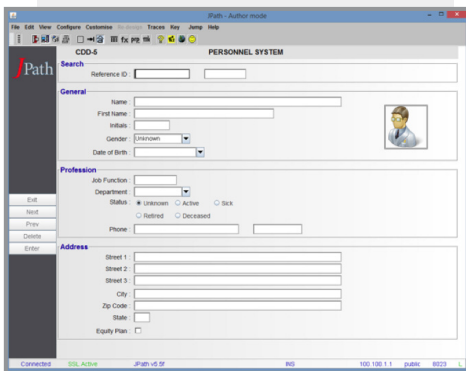
#### JPath HTML

- Standard Web Browser
- Web container, e.g. Tomcat

# JPath



JPath GUI with add-on



JPath layout feature with add-on

comforte 21 GmbH, Germany  
phone +49 (0) 611 93199-00  
sales@comforte.com

comforte, Inc., USA  
phone +1-303 256 6257  
ussales@comforte.com

comforte Asia Pte. Ltd., Singapore  
phone +65 6818 9725  
asiasales@comforte.com

comforte Pty Ltd, Australia  
phone +61 2 8197 0272  
aussales@comforte.com

[www.comforte.com](http://www.comforte.com)



For distribution partners in your region visit comforte's homepage  
[www.comforte.com](http://www.comforte.com)

## Features Overview

### ■ Dynamic One-to-one Graphical User Interface

Out-of-the-box, green screens are transformed into Windows look & feel with the appropriate use of color, lines, proportional fonts, buttons, etc. Labels and fields of a green screen are re-interpreted into Java GUI components.

### ■ Replacement of simple data entry fields

Simple data entry fields are replaced with checkboxes, dropdown boxes, radio buttons calendars, etc.

### ■ Images

Foreground and background pictures can be added to the GUI, and images can be derived from host screen character patterns.

### ■ Function Key Bars

Function key choices are displayed as buttons in a button bar.

### ■ Push Button Menus

Push button menus are created directly from host screen choice lists.

### ■ Internationalization

Host screen text can be translated online into the user's own language.

### ■ Macros

Automatic or manually triggered navigation macros can be recorded.

### ■ Right-to-left text

Bi-directional texts (Arabic) is supported.

### ■ BIG5 Support

Double byte characters (Chinese, Japanese) and IME are supported.

### ■ Secure SSL or SSH connections

Data sent to or coming from the host can be encrypted.

### ■ Java API

A powerful Java API enables screen optimization, data exchange with other applications, screen consolidation, etc.

### ■ Layout Feature

Independently of the green screen layout, a JPath author can manually layout individual GUI screens so that data is clearly structured in its logical context.

### ■ HTML GUI

Optionally, a HTML server version displays the GUI screens in a browser on the client computer without the need of a Java VM which e.g. allows for the use of mobile devices.